



The Corpus Christi Area

Voter

October 2013

League of Women Voters
PO Box 8276
Corpus Christi, TX 78468-8276
<http://www.lwv-cc.org>

LWV-CC Officers, 2013-2014

President - Sandra Heatherley
814-9120; sheatherle@cs.com

Secretary - Matilda Saenz
214-240-5655
rsaenz87@sbcglobal.net

Treasurer - Maria Jimenez
888-756
nick.maria.jimenez@sbcglobal.net

Vice President, Program
Andrew Dimas, 688-6745
andrewkdimas@gmail.com

Vice President,
Community Relations
Bryan Bode, 877-3791
slowbode@usa.com

Vice President, Member Services
Vacant

Directors:
Pam Maupin, 949-8708
pammaupin@sbcglobal.net

Sally Farris, (210) 313-7028
s.farris@att.net

Coretta Graham, 815-8346
lawyergraham@msn.com

OFF-BOARD CHAIRS
Nominating Committee
Nick Jimenez, 888-7560

Website Editor - Lois Huff
774-1500; huffs@the-i.net

The VOTER Editors
Ricky Walraven; 992-8031;
wilraven26@yahoo.com

Chris Davis Garcia; 991-2784;
cdg1714@att.net

Immediate Past President
Judy Telge, 813-6397

Oct. 17 Luncheon Meeting

Due to scheduling difficulties our local League will not sponsor a public forum related to the bond issue election for Destination Bayfront. Instead we will hear the facts surrounding the development of the Destination Bayfront concept at the membership luncheon meeting on Thursday, Oct. 17.

J.J. Hart, CEO of the Coastal Wave, will be our speaker and we will gather for lunch at the Hibachi Grill at 11:30 a.m. The Grill is located at the corner of Staples and Williams and features a fabulous all-you-can-eat buffet. The cost is \$12, which includes gratuity. Bring a friend and learn more about the upcoming city bond election.

On page 4 the ballot wording for the Destination Bayfront bond proposition is printed.

Nov. 5 Joint Constitutional Election

Early Voting, Oct. 21-Nov. 1; Voting Substations Listed

The Nueces County website, www.co.nueces.tx.us, (click on "Elections") has complete information about the Nov. 5, 2013, Joint Constitutional Election, including ballot wording for the nine state Constitutional Amendments, the City of Corpus Christi Destination Bayfront bond election, and the London ISD bond election; early voting substations and mobile voting locations; election day polling places; and master and sample ballots (in both English and Spanish). Information and applications for mail-in ballots are also included on the website.

Early Voting will be conducted Oct. 21-Nov. 1 at nine Early Voting substations during the following dates/hours:

Please see Election, page 3

The League of Women Voters, a non-partisan, political organization, encourages informed and active participation in government, works to increase understanding of major public policy issues, and influences public policy through education and advocacy.

President's Message

By Sandra Heatherley



Sandra Heatherley

We had two successful voter registration events in September. The first was on September 6 during the first Friday Art Walk. Thanks to volunteers Andrew Dimas, Sally

Farris and Stacey Barrera. The second was at the university on National Voter Registration Day as we joined more than 200 other local leagues across the country in registering new voters. Volunteers for that event included Pat Parr, Pam Maupin, Ruth Falck, Bryan Bode, Hannah Chipman, Lois Huff, Bailey Landress, and Barbara Vollmer. Thanks to everyone for their time and energy! There was one more opportunity to register voters at the October 4 Art Walk before voter registration closed on October 7 prior to the Nov. 5 election.

The League of Women Voters of Texas and of Corpus Christi have taken a stance in favor of proposition #6 on the November ballot. This proposition calls for an amendment of the Texas

Constitution to allow for the transfer of \$2 billion from the state's "rainy day fund" to the State Water Implementation Fund for Texas (SWIFT) to assist in funding priority water projects across the state. The Voters Guide for the November election on this and eight other proposed constitutional amendments is available on our web site.

There is only one question on the ballot for the City of Corpus Christi and that is the question of issuance of bonds to fund the first phase of Destination Bayfront. The exact wording of that question is printed in this issue of the VOTER. Our members will have an opportunity to learn more about the question and the impact on the future of our community during the Oct. 17 membership meeting.

In November we will hold a meeting to determine if there is consensus among members on the questions which arose from the statewide human trafficking study. On August 1, 2013, each member received a copy of the *Facts and Issues* which were developed by the study group and which also include the consensus questions to be considered. Those questions are reprinted in this issue of the VOTER to allow members time to ponder and decide which consensus questions to support. (See pages 5-6.)

League Members register 72 voters at A&M-CC

Our local league hosted a table at Texas A&M-CC on Sept. 24 and registered a total of 72 students and faculty. In addition, information regarding new voter identification requirements and content of the November election was distributed.

National Voters Registration Day is an opportunity to put our differences aside and celebrate the rights that unite us as Americans. In the past, millions of Americans did not vote because they missed a registration deadline or did not know how to register. This special day has gained momentum throughout the country and is sup-

ported by the National, State and Local League of Women Voters as well as other organizations and community groups.

Sandra Heatherley coordinated the event. Deputized volunteers were Judy Landress, Lois Huff, Sally Farris, Ruth Falck, Hannah Chipman, Pat Parr, Barbara Vollmer and Pam Maupin.

For members who have not as yet served in this role, please consider volunteering for the next voter registration event. It is a fun, uplifting experience and you will walk away knowing "you made a difference."

Rep. Todd Hunter Hosts Desalination Rally

By Sally Farris

On Monday, September 23, a surprise turnout caused overflow at the Ortiz International Center where State Rep. Todd Hunter called a rally to push for desalination in the Coastal Bend region. Although the newspaper reported a crowd of 200 persons, I felt the crush of a rock concert. The throng was there to hear about removing salt from brackish (ground) and sea water. Ordinarily, not a glamorous subject.

Hunter, our senior legislator in Austin, gathered county judges, council members, and mayors to explain his moves to craft an 18-month study to answer all questions, pro and con, that have to do with desalination on a large scale. Hunter wants to be poised for the next legislative session in 2015 so that the Coastal Bend has an advantage in capturing state funds and agency support for a large scale desalination project. Hunter urged experts in the audience to contribute their skills to the master study.

Here's why Todd Hunter says desalination is no longer pie in the sky, but a destiny. Fresh water is now the major issue in community survival, statewide. That holds for both domestic and

industrial uses. Hunter said local industry now consumes 23 MILLION GALLONS OF WATER PER DAY.** We lost a recent industrial plant because the business needed 3 million gallons a day that our resources could not supply. Couple that loss with 4 projects that seem certain: Italian M&G plastics, the Chinese pipe plant, the Austrian steel plant, and Schlitterbahn water park. Suddenly, high process costs to remove salt from ground and sea water are not daunting.

Hunter wants to leave no stone unturned to accomplish two things: (1) answer any and all conceivable questions that have to do with desalination; and (2) capture legislative support to make the Coastal Bend the premier desalination center in Texas. He alluded to unidentified supporters who are interested in financing a major desalination project. Bech Bruun also addressed the crowd. He is one of the three, new and influential Texas Water Development Board members. Mr. Brunn identifies himself as a Corpus Christi native. His position on the state Water Development Board is critical to coastal desalination.

Election

From Page 1

Mon-Sat., Oct. 21-26, 8 a.m. to 5 p.m.

Sun, Oct. 27, 12 noon to 5 p.m.


Mon-Wed, Oct. 28-30, 8 a.m.-5 p.m.

Thurs-Fri, Oct. 31-Nov. 1, 7 a.m. to 7 pm

The nine Early Voting substations include Nueces County Courthouse, Bishop Community

Center in Bishop, Corpus Christi Area Council for the Deaf, Flour Bluff ISD Maintenance Office, Greenwood Senior Citizens Center, Hilltop Community Center, Johnny S. Calderon County Building in Robstown, Seashore Learning Center (Marlin Bldg), in Padre Isles, and Port Aransas Civic Center Complex.

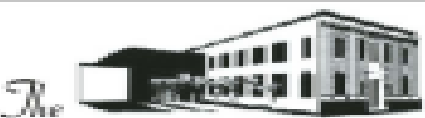
CITY OF CORPUS CHRISTI, TEXAS



NELDA MARTINEZ
Mayor

(361) 826-3105 (Ofc)
(361) 883-1403 (Fax)
Email: nelda@neldamartinez.com

P.O. Box 9277
CORPUS CHRISTI, TEXAS, 78469-9277



GUARANTY TITLE BUILDING
A CORPUS CHRISTI LANDMARK

- 154,000 sq.ft. Offices Available
- Classic/Beacon Red Brick Building
- Modern Renovated Office Facilities
- Rapid Access to I-37 & Ocean Drive

LANDLORD RESOURCES
857-8991

Corner of Chaparral & Mann-Downtown near the Federal Courthouse

NOV. 5 BALLOT WORDING

Proposition No. 1 – Destination Bayfront

The City Council of the City of Corpus Christi, Texas shall be authorized to issue and sell one or more series of general obligation bonds of the City in the aggregate principal amount of not more than \$44,600,000 for the purpose of designing, demolishing, constructing, acquiring, improving and equipping a public-private project known as Destination Bayfront -- a parks, recreation and cultural enrichment project developed with public input to make improvements, renovations and enhancements to revitalize approximately 34 acres of public land and beach downtown, which would leverage public construction dollars with private donations and other sources of funding for ongoing park programming, operation and maintenance costs, the improvements and amenities to be made having been developed through a series of public meetings and which include:

- Improvements to Veterans area including shaded event space, restrooms and handicapped parking;
- Large event area with covered stage, including necessary utility connections and lighting to support festivals and other large events;
- Boardwalk promenade along the seawall with shade structures and restrooms adjacent to shops and restaurants;
- Public pier with shade structures;
- ADA ramp to access Magee beach and beach wash-off stations;
- Children's and family play areas including shaded seating, recreational and playground equipment for all ages, a climbing wall, and a water spray feature;
- Senior exercise area;
- Hiking and jogging trails and sports courts;
- Dog park;
- Picnic area;
- Adding shaded areas, landscaping, lighting, drop-off points and transportation connection improvements throughout the site;
- Providing parking within the area; and
- Construction, renovation and acquisition of buildings and other facilities for lease or grant of retail, food or other concessions to private entities; with such series or issues, respectively, to mature serially or otherwise within not to exceed forty years from their date and to be sold at such prices and bear interest at such rates (whether fixed, floating, variable, or otherwise, but in no case at a rate that exceeds the maximum rate per annum authorized by law at the time of any such issuance), as shall be determined within the discretion of the City Council (provided that such rate of interest shall not exceed the maximum rate per annum authorized by law at the time of the issuance of any issue or series of said bonds); and the City Council shall be authorized to levy and pledge, and cause to be assessed and collected, annual ad valorem taxes, within the limits provided by law, on all taxable property in the City sufficient to pay the annual interest and provide a sinking fund to pay the bonds at maturity and to pay the costs of any credit agreements executed in connection with the bonds.

Consensus Questions for Human Trafficking Study

This Fall, the 28 Leagues across Texas, including LWV-CC, will focus on the “Facts and Issues” publication produced by the Human Trafficking Study Committee of LWV-Texas. The study was approved in April 2012 at the state convention, and committee members did intensive study and information gathering on the problem of human trafficking in the United States and how the issue is currently being addressed. Local League members now will review the informational materials and consider the Consensus Questions posed below.

The LWV-CC consensus meeting will be held on Thursday, Nov. 21. More details will follow on the meeting, but please save this date!

Consensus

What is consensus? Consensus is agreement of a substantial number of members reached through group discussion. It is not a vote, but a sense of what the group supports. Consensus discussions produce group opinion, whereas a vote is a tabulation of individual opinions. Consensus is not a simple majority, nor is it necessarily unanimity. It is a decision with which participants are comfortable overall. While voting might polarize people unless the vote is unanimous, consensus is a unifying process.

1. LWV Texas should be opposed to all forms of human trafficking: international and domestic, sex and labor, adults and children.

- Agree
- Disagree

Comments:

The 2000 United Nations Palermo Protocol elaborates the “3P Paradigm” for government efforts to stop human trafficking: prevention, prosecution and protection. Questions 2-6 follow the 3P Paradigm.

2. Prevention: There are several human conditions that underlie trafficking, such as poverty, attitudes about women, cultural traditions about slavery, and dysfunctional families. What methods of prevention would you support to specifically address trafficking? Choose all that you support.

- Public outreach and awareness programs
- Public-private partnerships to combat human traffickin
- Training for medical professionals and school personne
- Services for homeless, throwaway youth and other at-risk populations
- Internet safety education for youth, parents and teachers
- Other. Please specify.

Comments:

3. Prosecution: How should human trafficking be prosecuted? Choose all the statements that you support.

- Promote strong laws against trafficking and prosecute traf-fickers to the fullest extent of the law.
- Require human trafficking training for law enforcement officers and prosecutors.
- Put convicted sex traffickers of children on the sex offender registry.
- Put convicted sex traffickers of adults on the sex offender registry.
- Foster and support coordination among national, state, local and nongovernmental agencies, including the maintenance and sharing of reliable trafficking data.
- Strengthen civil laws to close down properties that allow human trafficking.
- Other. Please specify.

Comments:

4. Prosecution: How should victims of sex trafficking be treated by prosecutors? Choose all the state-ments that you support.

- Persons who are identified as victims of sex trafficking should be diverted into justice and rescue programs that provide access to services such as counseling and job training.
- Assume all minors are victims, no proof of coercion required.
- Minor victims of sex trafficking should receive legal aid and other court-related services.

Please see **Consensus**, page 6

- Adult victims of sex trafficking should receive legal aid and other court-related services.

- Other. Please specify.

Comments:

5. Prosecution: How should buyers of sexual services (“johns”) be treated? Choose all the statements that you support.

- Prosecute buyers of sexual services from minors.

- Prosecute buyers of sexual services from adults.

- Put buyers of sexual services from minors on the sex offender registry.

- Put buyers of sexual services from adults on the sex offender registry.

- Require buyers of sexual services to participate in awareness education about human trafficking.

- Other. Please specify.

Comments:

6. Protection: What type of protection should be provided to victims? Choose all that you support.

- Services such as housing, medical, counseling, job training, legal aid and translations

- Guidelines for professionals to identify and assist victims

- Enhanced ability to sue the trafficker for civil damages

- Protection of victims from their traffickers during prosecution

- Defined roles for child welfare system and juvenile justice system in assisting trafficked minors

- Guardianship and protective custody for trafficked minors when home situation would put the minor at risk

- Other. Please specify.

Comments:

7. Which of the following organizations should

have primary and secondary responsibility to fund the prevention and prosecution of human trafficking and protection of victims: federal government, state government, local government, nongovernmental organizations (NGOs)? Put 1 for primary, 2 for secondary.

- Prevention

___ Federal govt. ___ State govt. ___ Local govt. ___ NGOs

- Prosecution

___ Federal govt. ___ State govt. ___ Local govt. ___ NGOs

- Protection

___ Federal govt. ___ State govt. ___ Local govt. ___ NGOs

Comments:

8. Human trafficking is modern slavery, but many people are not aware that it exists even in their own communities. Texas, in particular, is a transportation hub for sex trafficking. What issues need to be addressed in education and public awareness of this “problem hidden in plain sight”?

Comments

Vote for Water

Support Proposition 6

Corpus Christi, Texas – The League of Women Voters of the Corpus Christi Area announces support for Proposition 6 in the November 5 election in order to meet the growing water needs in the state of Texas.

This amendment to the Texas Constitution sets up a mechanism to receive \$2 billion in funds from the Economic Stabilization Fund (otherwise known as the Rainy Day Fund). Authorization for these funds has already passed the Texas legislature. However, unless the amendment is passed, the \$2 billion will remain in the Rainy Day Fund.

“Our area of the state is experiencing exceptional or extreme drought,” according to Sandra Heatherley, LWV-Corpus Christi Area President. “Prolonged dry conditions put a strain on water supplies for all uses. Population growth coupled with increased hydrologic fracturing means we need even more water.”

The Regional Water Planning Group of water region “N,” which serves the planning interests of Corpus Christi and the surrounding area, has recognized the need to increase water supply as well as reserves. The phase II of the Mary Rhodes pipeline, the use of Aquifer Storage Reserves, (ASRs) and off-channel reservoirs are examples of planning for future water needs in our area.

Proposition 6 helps implement the Texas Water Plan of 2012, with emphasis on conservation, reuse and storage of water while maintaining protection for environmental flows; Texas rivers, bays and estuaries.

The League of Women Voters of the Corpus Christi Area encourages all citizens to vote for Proposition 6 in the November 5 election.

Note to Readers:

Below and on the following page is an explanation by LWV-TX on supporting the Water amendment as well as questions and answers that might help League members better understand the issue and explain it to others.

Proposition 6 – The Water Amendment

It has been some time since LWV-TX has supported an amendment to the Texas Constitution, but at its June 2013 meeting, the LWV-TX board voted to support the water amendment, Proposition 6, on the November ballot. Proposition 6 is a mechanism to fund the 2012 Texas Water Plan which involves a one-time use of \$2 billion of the Economic Stabilization Fund (otherwise known as the Rainy Day Fund).

The League’s first study of water planning occurred in 1968. We have since both supported and opposed various water plans as well as their funding. After careful review of our position this year, it was determined that the 2012 Texas Water Plan would implement many of our positions on development of water resources and that we should support the funding provided in this constitutional amendment. LWV-TX advocated for the adoption of SJR-1, proposing the water amendment, and local Leagues helped in that effort.

Note: Questions and answers are provided on pages 8 and 9 by LWV-Texas's Advocacy Chair.

Water Bond Amendment Questions and Answers

1. I thought the League didn't support constitutional amendments.

The League has long been known for its Voters Service work—however, we also advocate on issues our members have studied and agreed to support. Support for long-range, ecologically-sound planning for water, including conservation and adequate funding, is one of our positions.

2. Can LWV both advocate for one amendment and publish an objective, neutral Voters Guide to all amendments?

The League of Women Voters, like many other groups, is divided into two organizations: The League of Women Voters of Texas Education Fund and the League of Women Voters of Texas. The Education Fund does only education, such as Voters Guides; it does not support or oppose issues. It is scrupulously non-partisan.

The League of Women Voters of Texas is a membership organization that is also scrupulously non-partisan. However, it has a different IRS designation and is allowed to take positions on issues that are in the “promotion of social welfare.” It is allowed to participate in campaigns, such as Prop. 6, and influence legislation relevant to its program. The League of Women Voters of Texas reaches those positions through membership study and agreement.

3. This amendment is complicated. What does it really do?

The amendment sets two financial structures. One is called the State Water Implementation Fund for Texas (SWIFT), which receives and directs money to various financial programs of the Texas Water Development Board (TWDB) and makes direct loans. It is considered a “bank.” The other is called the State Water Implementation Revenue Fund for Texas (SWIRFT), which provides revenue to guarantee bonds as they are sold.

4. I'm still confused. Can you state that more simply?

One of the financial structures receives money (SWIFT) and acts as a bank, giving direct loans as well as sending money to the other structure (SWIRFT), which provides revenue for bonds.

5. Where is the \$2 billion dollars right now?

Right now it is in the Rainy Day Fund. If this amendment passes, it will be shifted to the State Water Implementation Fund for Texas (SWIFT.)

6. Is the \$2 billion in the budget?

Yes, it is in a Supplemental Appropriation (provided for by HB 1025.) It will only be shifted to SWIFT if this amendment passes.

7. Who determines how the \$2B is spent?

The Texas Water Development Board. Its composition has changed. It did have six volunteer members, but now it has three full-time members. Governor Perry has already appointed them.

8. \$2 billion dollars doesn't sound like very much. Is that going to be enough?

\$2 billion is not enough for the water needs of Texas. However, it is estimated that income from the loans and bonds will, over time, reach \$50 billion. The amount estimated that Texas will need for water projects is \$53 billion by 2060. In addition, the Texas Water Development Board already has a \$6 billion bonding authority. Thus, the TWDB can now fund larger projects.

9. Can the Water Development Board do anything that they want?

No, they are to implement the Texas Water Plan of 2012, 20% of which is to be used for conservation. Furthermore, we now have in place a process for prioritizing projects. The plan includes conservation, water reuse, desalination, and facilities such as reservoirs for storage of water.

Please see Water, page 9



Photos by Chris Garcia

Nuri Rodriguez, Voter Registrar for Nueces County, presented information about the role of deputized voter registrars and the importance of following procedure as voter registration is conducted. She distributed packets of information to League members interested in serving as registrars and reminded everyone of dates to observe in returning the completed applications to the county.

Meeting promotes Voter Registration



Barbara Vollmer (left) and Hannah Chipman (right) were among those attending the Sept. 19 League meeting.

Water

From Page 8

10. Are you sure this amendment won't raise taxes?

The amendment will NOT raise taxes. The money will come from the Rainy Day Fund, and it is a one-time use of money that is already there.

11. Where does money for the Rainy Day Fund come from and how much is in the Fund now?

The Rainy Day Fund is a savings fund that allows Texas to set aside excess revenue for use in times of unexpected revenue shortfall. The fund consists of 75% of oil and gas severance taxes and is capped at 10% of the total general revenue budget. The fund is currently over \$8 billion and is projected to grow to nearly \$12 billion by 2014-15.

JOSE MIGUEL DURAN, M.D.
Gastroenterology

Doctors Square
2222 Morgan Ave., Suite 111
Corpus Christi, Texas 78405

Ph (361) 883-6623
Fax (361) 883-0748

Hunter&Handel P.C.

Todd A. Hunter, Attorney at Law

555 N. Carancahua, Suite 1600, Tower H
Corpus Christi, Texas, 78478
todd@hunterhandel.com

Phone (361) 884-8777

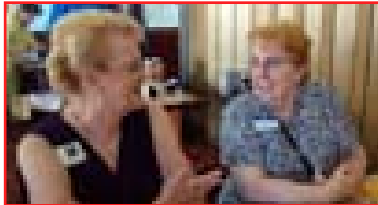
Fax (361) 884-1628



THE LEAGUE OF WOMEN VOTERS
CORPUS CHRISTI, TEXAS
 PO Box 8276
 Corpus Christi, TX 78468

Save the Date:

November 7 for an evening mixer for LWV-CC members at Pam Maupin's home. From 5:30-7:30 pm at 13801 Eaglesnest Bay. Enjoy wine and wisdom as members visit and get to know each other in a relaxed atmosphere.



**Welcome,
New Member**
Ruth Falck

Renewals
Constance Fanning
Marjorie Walraven

Sandra Heatherley (l) welcomes Ruth Falck at the September meeting



Advertising space in the VOTER is available! The cost is \$ 100 for 10 issues during a calendar year.

Send check and your business card or advertising copy to Treasurer Maria Jimenez at the League address.



CORPUS CHRISTI OUTSIDE OF FARMERS!

When: Every Saturday (year around)
 Time: 9:00 AM Till Sell Out
 Where: 5800 Everhart Rd.
www.farmersmarketcc.org

**Be a "Localvore."
Support you local growers/gardeners.**

LWV Corpus Christi Renewal / New Membership Application

Join now and help in the effort to promote political responsibility through informed, active participation in government.

Type of membership: New___ Renewal___
 Individual \$60___ Student \$30___ Household \$90___

Name_____

Household Member's Name _____

Address_____

Work Address (optional)_____

I prefer to receive my mail at: home or work.
(Please circle your preference above.)

Home phone_____

Work or Cell phone_____

Fax number_____

E-mail Address_____

**Please return this form to: League of Women Voters
 P. O. Box 8276, Corpus Christi, Texas 78468.
 Membership is from June 1 through May 31.**

Volunteer to Teach an Adult to Read! Corpus Christi Literacy Council

Mary V. Gleason
Executive Director

4044 Greenwood Dr.
 Corpus Christi, Texas
 Phone: 361-857-5896
 Fax: 361-857-5898
 E-mail: gleason@ccliteracy.org
www.ccliteracy.org

